

Press information, 17.01.2024

Beautiful décor through innovation

Christmasworld Frankfurt/Main 2024

We heartly invite you to our booth and are pleased to present you our chistmas décor.

Contact person:

Roger Müller

CEO

roger-mueller@krebslauscha.de

Michael Krebs

CEO

michael-krebs@krebslauscha.de

Philippe Boutonnet

Export Sales Manager & Head of Product Development

philippe-boutonnet@krebslauscha.de

hall 4, booth A14



Showroom in Lauscha

Christmas trends 2024

Traditional Christmas

Traditional familiarity is revealed in a palette of deep red, calming green, golden shine and soft beige. The combination of these colors creates a timeless atmosphere that conveys warmth and security.



Decorated glass balls
shiny/velvet golden crowns, 4
pcs., 8cm
(KGL24275)



Ripple glass ball
red/gold velvet, 8cm
(KGL24231)



Angel with lantern, 13cm
(Kgl24-TW_016)



Heart snowy village,
red velvet
(KGL24203)



Diamonds green & red, 8cm
(KGL24249)



crown, 7cm
(KGL24204)



Ripple glass ball white gold
velvet, 8cm (KGL24232)



Girl with a Pearl Earring
(KGL24325)



Peacock white gold with
rhinestones, 11cm
(KGL24214)

Old Christmas Time

"Old Christmas Time" awakens a longing for the simple and warm traditions of Christmas times past. The focus is on the simplicity of handmade decorations. In this nostalgic performance, children playing, nostalgic Santas and snowmen play a special role.



Snowman with Deer
(KGL24344)



Playing Children, 12cm
(KGL24342)



Moon head (KGL24350)

White Christmas

White Christmas in the splendor of the Christmas tree - Immerse yourself in the magical world of white Christmas, where the festively decorated Christmas tree takes center stage. Each ball shines in white with a slightly shimmering blue, like sparkling snowflakes in the winter wind. The delicate pieces of jewelry create an atmosphere of elegance and timeless beauty. Every ornament tells a story.



Set with 6 icicles
(KGL24338)



Glass ball assortment winter
forest (KGL24368)



Heart snowy village, white
velvet, 10cm (KGL24202)

Blue Christmas Night

Blue Christmas Night: A celebration of the starry sky on the Christmas tree - Let us delve into the secrets of a blue Christmas night, where the Christmas tree becomes the shining centerpiece. Each decoration shines in deep blue, like stars twinkling in the night sky. The shiny balls reflect soft reflections of the moonlight, giving the tree a touch of celestial magic. Each Christmas tree decoration tells stories of mysterious winter nights and is reminiscent of the silence that can only be found in these magical moments.



Glass ball assortment snowy village, cobalt blue (KGL24366)



Glass balls & drops cobalt blue velvet with silver crowns, 7-10cm (KGL24270)



Reflex assortment peacock, 8-10cm (KGL24265)

Nostalgic Christmas

Nostalgic Christmas: Timeless memories on the Christmas tree - Reawaken the magic of Christmases past! Every ball, every pendant, every ornament carries a story from past holidays. The delicate balls in soft colors are reminiscent of vintage figures and bring back the charm of bygone times. Each piece is like a window into the past, a piece of history on the festively decorated tree. Celebrate a "Nostalgic Christmas" and let your Christmas tree become a guardian of timeless memories. May every decoration bring a smile of nostalgia to faces and fill the festive mood with a touch of yesterday.



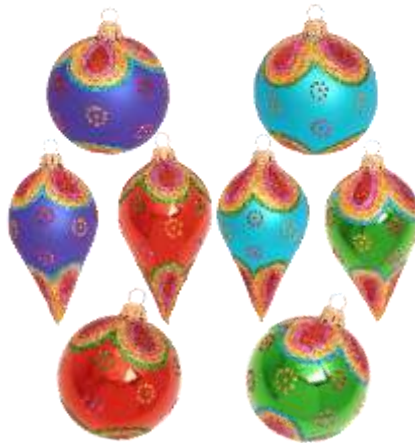
Reflex assortment glass balls & drops, icelaquer red/green/blue/pink, 7-10cm

Colorful Christmas

Colorful Christmas: A celebration of diversity on the Christmas tree - Give Christmas a lively touch with a colorful Christmas tree decoration! Baubles, ornaments and figurines shine in a rainbow of colors, like vibrant lights that brighten the festive mood. The colorful ornaments that decorate the tree spread happiness and joy. The Christmas tree decorations tell stories of encounters, memories and the diversity of life. Each ornament is like a brush stroke on the canvas of a living Christmas.



Glass ball Set, 8cm



Glass balls & drops Flower Power, 8-10cm



Fairy with wings, 14cm



Alien on Skateboard Set,
Neon, 7cm

Jewels by Krebs Glas Lauscha

The new collection from our exclusive Jewels by Krebs Glas Lauscha line.

Elegant Christmas tree decorations for the exclusive Christmas tree in the style of the Fabergé heritage. Extraordinary highly decorated balls and eggs decorated with Swarovski style crystals and sparkling glitter particles. This extraordinary line with lavish decorations is also extremely exquisite on other occasions.



Glass ball Byzanz, black, 10cm (KGL24220)



Reflex glass ball with black Madonna, 8cm (KGL24217)



Reflex glass ball with white Angel, 8cm (KGL24371)



Glass ball Bordeaux with Swarovski stones, 8cm (KGL24218)



Art Nouveau Glass ball, black, 10cm (KGL24221)



Art Nouveau Glass ball white/violett, 10cm (KGL24223)

Bird Paradise

Bird paradise: Winged elegance on the Christmas tree - Let the Christmas tree be transformed into a bird paradise where elegance and splendor of color merge in perfect harmony. Each ornament is like a feathered friend that adds vibrancy and grace to the tree. Colorful birds with shimmering feathers sway gently between the branches as if singing a song of nature. Red cardinals, blue peacocks and colorful parrots and hummingbirds give the Christmas tree an exotic touch. The bird paradise on the Christmas tree becomes a symbol of freedom and lightness, a homage to the beauty of nature.



pair of cardinal birds, 9cm



Parrot, 18cm



Peacock, 11cm

New Collection 2024

Dystopian Elegance

In the Dystopian Christmas, which is characterized by uncertainty and dark shadows, a unique form of beauty emerges: Dystopian Elegance. During this festive season, buildings, clothing and art reflect an atmosphere where beauty is found in imperfection and in the contradiction between decay and grace. Seen as an expression of rebellion against the inevitable, Dystopian Elegance is a reminder that even in the darkest of times, a spark of creative splendor and individual expression remains alive. It is a Christmas that celebrates a unique and resilient beauty despite the uncertainties and shadows.



Steampunk head, 11cm



Dystopian Owl, 11cm



Pilot Dog, 8cm



Steampunk glass ball assortment, 6 pieces, 8cm



Dystopian Owl, 12cm

Zodiac sign glass balls

Immerse yourself in a sparkling starry night with our latest Christmas tree decoration collection. Each ball presents one of the twelve zodiac signs, artfully decorated with glittering rhinestones. Add a personal touch to your Christmas tree and let the stars shine in your home.



Glass ball Aquarius, light blue velvet, 8cm



Glass ball Lion, gold velvet, 8cm



Glass ball Sagittarius, violett velvet, 8cm

Tiny Christmas

Tiny Christmas: Delicate magic in miniature format on the Christmas tree - Immerse yourself in the enchanting world of Lilliput Christmas, where the Christmas tree is enchanted with delicate decorations in miniature format. Every tiny ball, every miniature ornament carries a special magic. Tiny Santas drowning in miniature wonders and tiny animals moving quietly through small snowy landscapes add a touch of cuteness to the tree. The delicate miniature decorations create a magical atmosphere in a small format. In the world of Tiny Christmas, every branch becomes a miniature backdrop in which the imagination awakens in every detail. The small elements tell big stories and bring a touch of playful joy to the festive mood.



Mini Zoo Set, 3-5cm



Mini Set Rainbow, 3cm



Mini Aliens Set Aliens, 3-5cm

The Krebs family



Erika Krebs



Wilma Krebs Eberhard Wolfgang Helmut Krebs

As a family business in the fourth generation, Krebs Glas Lauscha offers Christmas glass ornaments. The company history begins with great-grandmother Erika Krebs and her son Helmut Krebs starting the production of glass Christmas tree ornaments in Rosenheim in 1947. In 1972 another company was founded in the USA. The German headquarters is in Lauscha/Thuringia, the birthplace of glass Christmas tree ornaments in 1848, where the old tradition of special shapes is continued to this day with the high-quality Lauscha Exclusive line. Meanwhile we deliver worldwide to the leading trading companies and are known for reliable delivery and very good quality.



Christmas by Krebs Roswell USA
International Hong Kong



Krebs Glas Lauscha Germany



Krebs

32 years Krebs Glas Lauscha (background information)

In November 1991, with the privatization of the Thuringian glass décor production, with the Krebs Glas Lauscha GmbH, the traditions of the Krebs family and the small town of Lauscha were connected. Already in January 1992, after only six weeks of development, the first collection **Lauscha Glas Creation** was introduced to the market. This showed the more than 50 years of experience of the Krebs family in the glass Christmas tree ornament industry was of invaluable.

The originality of Krebs Glas Lauscha products is ensured by skilled craftsmen who, on the basis of and modern production methods, continue the art of glassblowing. Lauscha is



considered worldwide as the birthplace of the glass Christmas tree ornaments. Already in 1848, it was a poor Lauscha glassblower, who for the Christmas tree of his children created the first glass treasures. The roots of Krebs Glas Lauscha can be traced back to the year 1905. At that time the first glassblowers joined together in the "1st glassblowers' cooperative of the Meininger Oberland" which had its headquarters on the current property in Ernstthal (Germany) since 1907.

Krebs Glas Lauscha attaches great importance to digital distribution, whereby business customers and end customers in the onlineshop (www.krebsglaslauscha.de) or in the virtual Showroom (<https://my.matterport.com/show/?m=mZPYqEkCE6p>), to view the current collection. The Showroom and factory outlet can be visited in Lauscha on site.

About the company Krebs Glas Lauscha

Krebs Glas Lauscha GmbH was founded in 1992, Am Park 1, 98724 Lauscha, OT Ernstthal (Germany). In the worldwide operating group of companies consisting of **Christmas by Krebs** (Dallas/USA) and **Krebs International** (Hong Kong) and **Krebs Glas Lauscha**, more than 100 employees are working.

The core competences are development, production and smooth distribution of glass Christmas tree decorations. Our product range consists from low-priced promotional items to exclusive collector's items. This means a complete range of products from a single source, the most efficient production worldwide and perfectly optimized logistics for our customers. The target groups include business customers as well as private customers. The managing partners are Michael Krebs and Roger Mueller.

Lauscha in the heart of Germany, in the Thuringian Forest, is the birthplace of the first glass Christmas tree ball

It was probably a poor Lauscha glassblower who, in the absence of real apples and nuts for his Christmas tree, created in 1847 the first forerunners of today's Christmas tree balls: fruits and nuts made of brightly painted glass. This was the birth of the glass Christmas tree ornaments, which from Lauscha began its triumphal march around the world. Today, Lauscha looks back on more than 150 years of tradition and is rightly called the birthplace of this craft.



1860

Soon the new products became more important, as they gained interest beyond the family circle and advanced to popular trade objects. In the archives of the Sonneberg Toy Museum is a colored sample book of the publisher E. & Carl Dressel from the year 1860, in which a varied assortment of Lauscha glassware is illustrated and

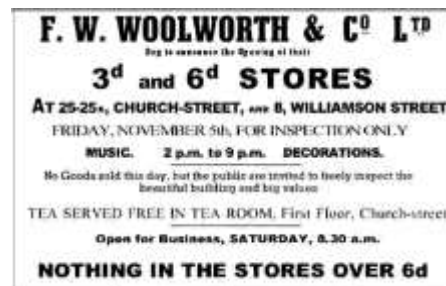
offered. Among them - in addition to the well-known glass beads - also glass balls mirrored with the lead-tin alloy and covered with a colored wax layer.

This is how glass Christmas tree ornaments were former made

1880

Around 1880, the American F.W. Woolworth first became aware of the products from Lauscha and sold them for US \$ 25.00 in his store in Pennsylvania. 10 years later, glass Christmas ornaments from Lauscha was already an export hit.

Thus, Woolworth ordered for his now successful department store chain in the U.S. already at the turn of the century 200,000 pieces of the sparkling baubles, angels, Santas, stars and other dazzling treasures. Even then, the artfully crafted and hand-painted creations were the "most distinguished" ornament on the Christmas tree.



1945

The post-war period brought many changes in the GDR and the Christmas tree ornaments were now produced in Lauscha in the VEB Thuringian glass ornaments.



1991

After the German reunification, the production in Lauscha was handed over to the experienced hands of the Krebs family, who still produce valuable collector's items in Lauscha with the **Lauscha Exclusive** collection.

How to make a mold blown glass Christmas tree ball



Sketch

It all starts with a good idea – a first drawing on a piece of paper and the experience of many years.



Modeling

Skilled hands of our modelers transform with great attention to detail the design into a clay model, from which via the intermediate step of a plaster model the cast-iron mold for the glassblowers is created.



Glassblowing

Fingertip feeling, skill and a sure eye, that's what a good glassblower needs. Over 800 degrees hot is the raw glass bulb heated at the gas burner (the lamp), from which the ornament is created. The viscous glass is then blown by mouth into the cast iron mold. Hence the terms "mouth blown glass", "lamp blown glass" or "mold blown glass".



Silvering

For the filigree jewelry forms, it is still pure manual labor to coat the thin-walled glass body on the inside with an extremely thin film of a silver nitrate solution.



Painting & Decoration

Last but not least, the glass form receives its elaborate painting. The fine details of the painting and decoration can only be realized in pure handwork and make each figure something unique.



The finishing touches to our glass ornaments

Once the ornament is finished being painted, the "skewer" is cut off by hand and the characteristic crab crown is attached. All pieces are then packaged by hand to prevent breakage and are then ready for shipment to Christmas tree ornament lovers around the world.

The precious glass mold will remain a well-kept treasure in the Christmas box for many years and will always bring new joy and make children's eyes shine every Christmas.



Press contact:

Krebs Glas Lauscha GmbH
Am Park 1
98724 Lauscha OT Ernstthal

Liesa-Marie Fehrmann

Marketing & Sales Manager
Tel.: +49 (0) 36702 - 28845
E-Mail: liesa-fehrmann@krebglaslauscha.de

Website:	www.krebglaslauscha.de
Händlershop:	www.business.krebglaslauscha.de
Endkundenshop:	www.krebglaslauscha.de
Virtueller Showroom	https://my.matterport.com/show/?m=8dG4xnY2yzf
B2B:	

find us on



www.facebook.com/krebglaslauscha



<https://www.instagram.com/krebglaslauscha/>



<https://www.tiktok.com/@krebglaslauscha>



<https://www.linkedin.com/company/krebs-glas-lauscha-gmbh/>



<https://www.xing.com/pages/krebs-glas-lauscha>



<https://www.youtube.com/channel/UC7qroqMMYj3aNrmnPb3H0xA>